



MULTIPANELUK^{LD}

a multitude of applications

Complete Colour Range

www.multipaneluk.co.uk



Information

Guarantees

Alupanel Colour Range

- All **PE** finishes hold a 5 year internal and external guarantee.
- All **brushed/mirror/Hammertone** finishes hold a 5 year internal guarantee only.
- All **Spectra** finishes hold a 5 year internal and external guarantee.
- All **Wood** finishes hold up to a 20 year internal and external guarantee.

Alupanel XTSeries Colour Range

- Every single finish under the “Alupanel XTSeries Colour Range” section holds up to a 20 year internal and external guarantee (please refer to warranty conditions)

 5 year INTERNAL guarantee

 5 year INTERNAL & EXTERNAL guarantee

 20 year INTERNAL & EXTERNAL guarantee

Gloss Content

PE finishes hold one of the highest gloss ratings in the industry (94%), creating a highly superior surface finish.

Colour Range

Multipanel UK hold one of the largest colour ranges on the market, all available as stocked product with impressive delivery times. We also have the ability to match almost any RAL colour (subject to minimum order quantities).

Storage Instructions:

ALUPANEL and ALUPANELXTSERIES should be stored in a clean, dry area. Before use, ensure panels are at a minimum temperature of 15°C. It is important that when sheets are not in use they are stored correctly.

A protective layer between sheets is advised to prevent damage occurring and stacking on a level, horizontal surface is recommended.

Protective Films:

The clear film on both sides of the panel is a protective measure whilst the panel is being processed, transported and installed. This protective film should remain on the panel for the duration of the installation only. You must remove this film once the panel has been fixed and set in place. The gloss/

matt finish is clearly marked on each side of the film. Due to the nature of the finishing process the paint has a directional quality. Care must be taken when using multiple sheets to ensure that the panel is installed in the same direction. This can be done by following the direction of the printed arrows on the protective film.

Cleaning:

Regular cleaning should be undertaken as part of the guarantee conditions. Frequency of cleaning is subject to location of the building (coastal/heavy industry, etc.)

- A moderate amount of pressure is all that's needed in order to clean the surface.
- It is important that you avoid any alkaline, acidic and abrasive cleaning products as this can have an adverse effect on the panels finish.
- When the panel has been cleaned you should rinse off with clean water and rub down with an absorbent cloth/leather to remove any residue left behind.

** All colours shown are the closest representation to the actual colours as the printing process will allow. We recommend you obtain a sample before submitting an order.*

Alupanel Colour Range

One

Solid Colours - PE Paint



Ultrawhite



Pure White
RAL302



Platinum White
RAL9016



Light Ivory
RAL1015



Ultra Marine Blue
RAL5002



Blue
RAL5022



Green
RAL6005



Traffic Green
RAL6024



Traffic Yellow
RAL1023



Orange
RAL2004



Traffic Red
RAL3020



Burgundy Red
RAL3004



Traffic Grey
RAL7042



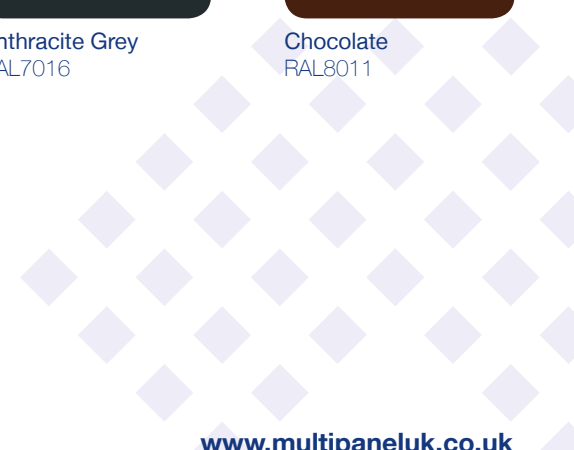
Anthracite Grey
RAL7016



Chocolate
RAL8011



Jet Black
RAL9005





Alupanel Colour Range

Two

Metal Finishes



Silver
RAL9006



Silver Mirror



Brushed Aluminium



Brushed Copper



Brushed Gold



Brushed Copper Gold



Gold Mirror



Bronze Metallic

Special Finishes



Spectra Midnight Sky
02985



Spectra Morning Mist
02983



Spectra Deep Ocean
02984



Spectra Forest Fire
02982



Spectra Woodland Green
02981



Wood Mahogany
37395



Wood Wenge
37042



Wood Medium Oak
37375



Wood Maple
37401



Brushed Black



Hammerstone



Stainless Steel
Brushed

Alupanel **XTSeries** Colour Range

One

Solid Colours - PVdf Finishes



White
MP9016



White
MP9010



Cathedral Grey
MP116



Graphite Grey
MP110



Granite Silver
MP115



Royal Blue
MP117



Stone Blue
MP118



Lemon Yellow
MP119



Mint Green
MP120



Dark Green
MP121



Scarlet Red
MP122



Deep Red
MP123



Jet Black
MP124



Alupanel *XTSeries* Colour Range

Two

Metallic & Mica Finishes



Argent
MP101



Champagne Silver
MP109



Gold Metallic
MP125



Brass Metallic
MP126



Rose Metallic
MP127

Mica Finishes



Silver
MP9006



Champagne
MP105



Moonlight Silver
MP106



Light Bronze
MP128



Medium Bronze
MP129



Dark Bronze
MP130



Smoke Silver
MP103



Grey Silver
MP104

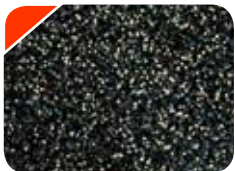


Blue Silver
MP131

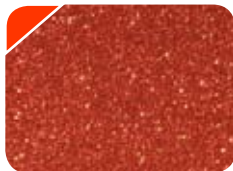
Alupanel *XTSeries* Colour Range

Three

Sparkling Finishes



Flash Black
MPF200



Flash Red
MPF201

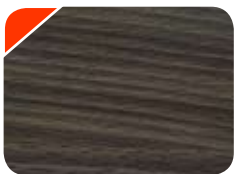


Flash Blue
MPF202

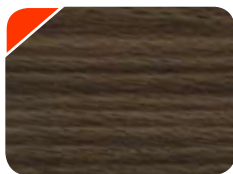


Flash Silver
MPF203

Wood Finishes



Wenge Wood
MPW300



Dark Walnut
MPW301

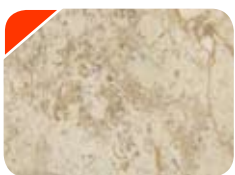


Red Chestnut
MPW302



Mahogany
MPW303

Marble Finishes



Perlato Marble
MPM400



Marron Marble
MPM401



Woodland Green
MPS500



Forest Fire
MPS501

Spectra Finishes



MULTIPANELUK[™]

a multitude of applications

UK Head Office

Unit 6, Site 2, Oak Business Units,
Thorverton Road, Matford, Exeter,
Devon, EX2, 8FS

Tel: +44 (0) 1392 823015

Northern Europe Office

Tel: +31 (0) 55 323 09 50

USA Office

Tel: +1 718 841 9940

www.multipaneluk.co.uk



MULTIPANELUK[™]

a multitude of applications